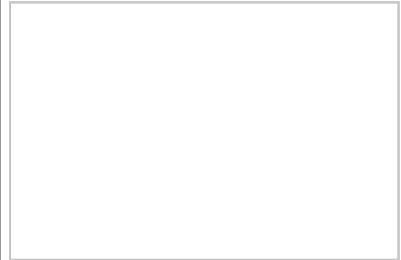
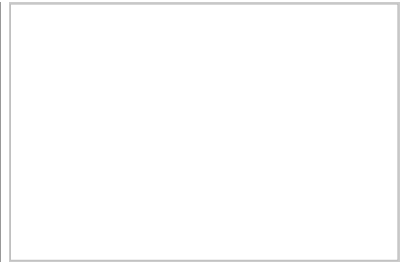


2 EDITH COURT

HAMPTON, VIRGINIA 23669 | MLS #: 10264312

\$225,000 | 4 BEDS | 2 FULL, 1 HALF BATHROOMS | 2 CAR ATTACHED GARAGE | 1804 SQUARE FEET

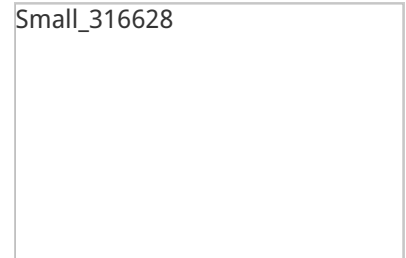


View Online: <http://2edithcourt.homeis4sale.com>

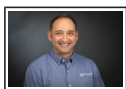
For Instant Photos: Text 844074 To 415-877-1411

You are going to love this traditional colonial on a large corner lot with a fenced in back yard. A formal living room is on the front of the home with plenty of space for furniture. A separate family room on the back has a fireplace with gas logs. Four nicely sized bedrooms are all upstairs. Lots of fresh paint and flooring. Huge garage and large driveway for parking. Large back yard is beautifully landscaped.

Small_316628



- Traditional Colonial on Large Corner Lot
- Formal Living and Family Room
- Gas Fireplace in Family Room
- Freshly Painted
- New Flooring
- Beautifully Landscaped and Fenced Backyard



AGENT INFORMATION

Jon May

M: 757-356-1226

License # 0225181649

jmay@fathomrealty.com

jonmay.fathomrealty.com

Fathom Realty

11815 Fountain Way

Newport News, VA 23606

ABOUT JON MAY

Full time since 1992, it continues to be a great pleasure to have a small part in my clients lives. It is an honor to assist my clients in moving to the next season of their lives by selling their home at the highest possible price in the shortest amount of time. It is a privilege to share in a first time home buyers dreams and goals or help a growing family find a larger home. The majori...

□

□

Disclaimer: All information deemed reliable but not guaranteed.