

35 SENECA AVE

PAWTUCKET, RI 02860

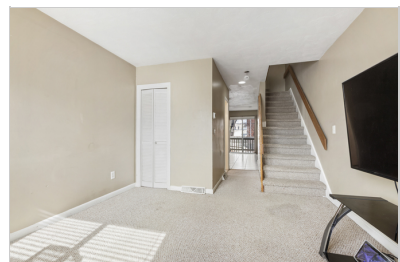
\$525,000 | 4 BEDS | 4 BATHROOMS | 6 CAR PARKING | 2708 SQUARE FEET



View Online: <http://www.viewlisting.info/122522>
For Instant Photos: Text 601351 To 415-877-1411

Welcome Home! Discover this beautiful and spacious duplex in the heart of Pawtucket! Each unit boasts a large, inviting kitchen and generously sized bedrooms, along with separate utilities for added convenience. Both units will be delivered vacant and move-in ready, making this a perfect opportunity for owner-occupants to live in one unit while the rental income from the other helps offset your mortgage! This property is packed with extras—enjoy ample off-street parking, a private backyard, and a rear deck perfect for entertaining family and friends! Conveniently located near major highways, top-rated restaurants, and all your shopping essentials, this home offers the best of comfort and accessibility. With a motivated seller ready for a quick closing, this is an incredible investment or homeownership opportunity you won't want to miss! Schedule your showing today!

- 2 family
- Duplex
- Full basements
- Back deck
- Back yard



AGENT INFORMATION

Rodney Long
P: 5086850523
License # 9576038
rodneylong@fathomrealty.com
35senecaave



Fathom Realty
154 Copeland Dr
Mansfield, MA 02048

ABOUT RODNEY LONG

Welcome Home! Discover this beautiful and spacious duplex in the heart of Pawtucket! Each unit boasts a large, inviting kitchen and generously sized bedrooms, along with separate utilities for added convenience. Both units will be delivered vacant and move-in ready, making this a perfect opportunity for owner-occupants to live in one unit while the rental income from the other helps of...

Disclaimer: All information deemed reliable but not guaranteed.